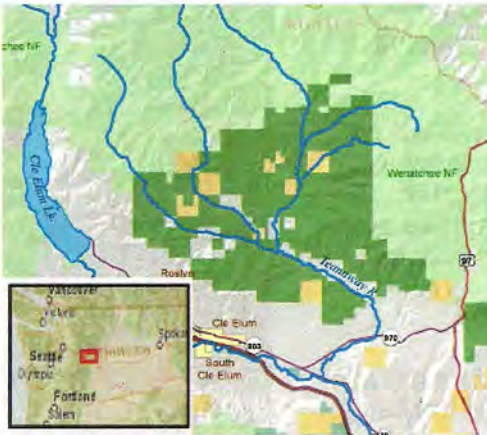




Teanaway Community Forest Q & A



On August 2, 2013, the Washington State Board of Natural Resources approved the purchase of the Teanaway, a 50,000-acre parcel situated at the headwaters of the Yakima Basin watershed. In addition, the Board authorized the acquisition to be managed as a Community Forest.

The Teanaway Community Forest will be the Washington State Department of Natural Resources (DNR's) first Community Forest. DNR is collaboratively managing the Teanaway Community Forest with Washington Department of Fish and Wildlife (WDFW).

What is a Community Forest?

The Community Forest Trust model was designed to protect working forests with a high risk of conversion that have great value to the local community. It is a tool to preserve Washington's working forests while safeguarding natural resources.

Community engagement is a key management component of a Community Forest. This management model extends opportunities to members of the local community to build local support, propose forestlands for inclusion, assist with acquisition, identify possible management objectives, and advise on revenue objectives.

Why did the state buy the Teanaway Community Forest?

The Teanaway Community Forest was identified as critical habitat for the conservation and restoration of many species, especially fish. The Teanaway Community Forest is also a key component of the Yakima Basin Integrated Plan, a water management plan developed by diverse stakeholders to address water needs in the Yakima Basin.

How will the public be involved in the management of the Teanaway Community Forest?

DNR and WDFW will engage the local community and interested stakeholder groups in a discussion about their management priorities for the landscapes. As part of the Community Forest planning process, interest groups for the Teanaway Community Forest will be identified and included in the process. This process also extends many opportunities for public input.

"The Teanaway is an extremely valuable area ecologically and to the community as a whole. It plays a pivotal role in the continued success of the Yakima Basin Integrated Plan."

**—Urban Eberhart
Yakima Basin
Irrigator**

What is the Teanaway Community Forest Advisory Board?

According to the Community Forest Trust Law, the department must establish a local advisory committee in cooperation with any interested and affected local government. The legislation further requires DNR to use the local advisory committee as a source of advice and comment on a post-acquisition management plan.

Who will fund the management of the Teanaway Community Forest?

The State Legislature is committed to providing ongoing funding for the Teanaway Community Forest.

Will I still be able to use the recreation trails and facilities in the Teanaway?

The Legislature directed DNR to maintain and, where possible, expand recreational opportunities consistent with watershed protection, for activities such as hiking, fishing, hunting, horseback riding, camping, birding, and snowmobiling.

As part of its role to identify when and where recreation access will be maintained or expanded, the Teanaway Community Forest planning process will incorporate the latest biological, geological, soils, and management data to inform the citizen-based advisory committee as it makes draft recommendations to DNR about management decisions.

Will grazing still be allowed? Will the Teanaway still be considered open range?

The Legislature directed DNR to maintain working lands for forestry and grazing while protecting key watershed functions and aquatic habitat.

Who will make the management decisions for this land?

The Teanaway Community Forest planning process will establish management objectives. DNR and WDFW will then collaboratively manage the land to meet those objectives.

Is there wilderness designation proposed for any of this land?

No. A Wilderness Designation is a federal designation. The legislative intent is for the Teanaway property to remain a state-owned Community Forest that supports multiple uses.

What happens to the land if the Yakima Integrated Plan falls short of its water storage goals?

If certain Yakima Basin Integrative Plan objectives aren't met by June 30, 2025, the Legislature has empowered the Board of Natural Resources to keep the Teanaway as a community forest; to transfer it to the Common School Trust for commercial forestry; or to otherwise dispose of the property.

Does this purchase affect my ability to manage my land in the Teanaway?

The purchase does not affect the use of private lands in the Teanaway River valley. Please contact Kittitas County for information on any county planning efforts.

What will happen to the campgrounds at 29 Pines and Teanaway West Fork?

Based on the legislative intent, recreational use will continue; however, the specifics will be determined through the planning process.



Photos Courtesy of The Wilderness Society