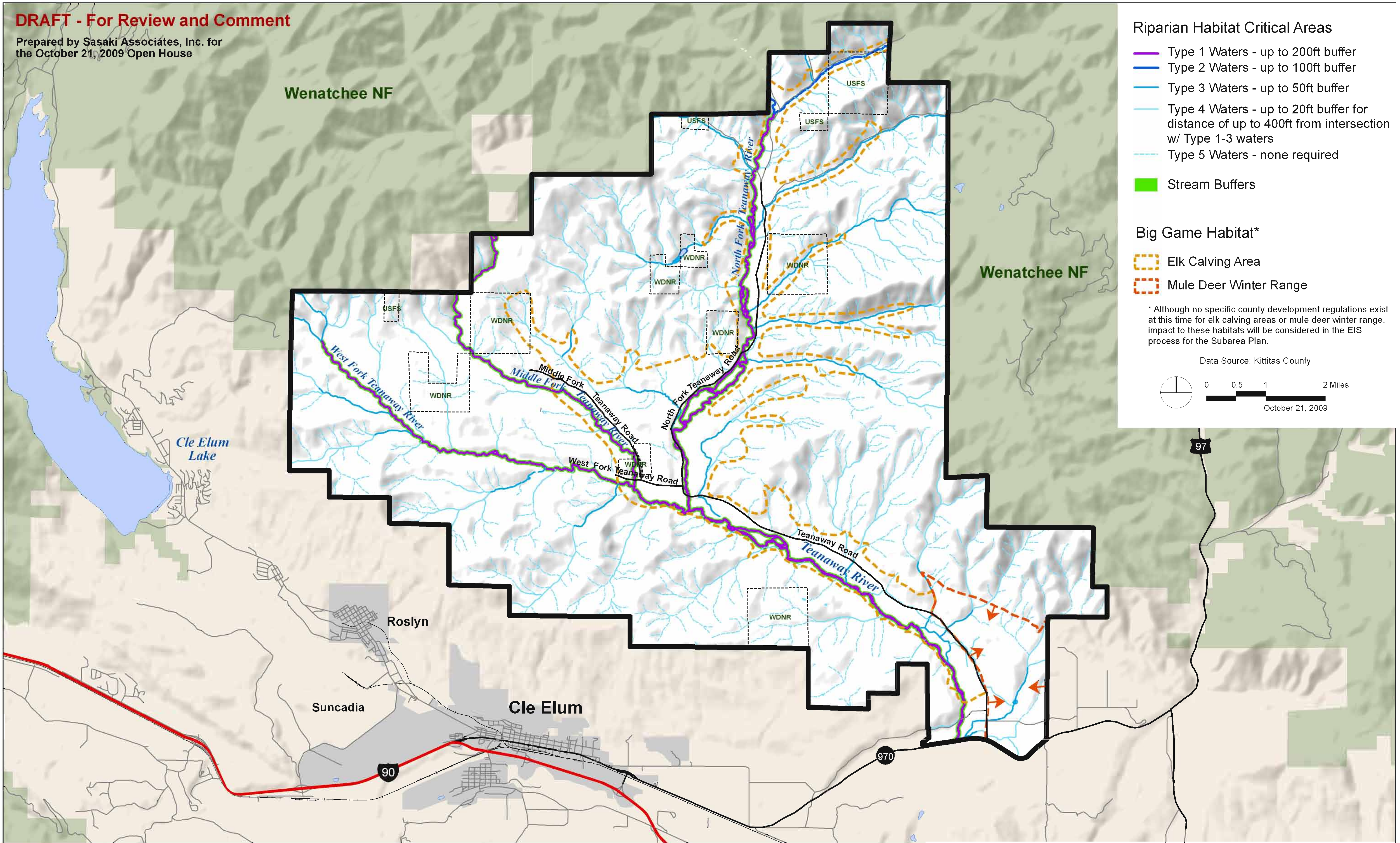


DRAFT - For Review and Comment

Prepared by Sasaki Associates, Inc. for
the October 21, 2009 Open House



Riparian Habitat Critical Areas

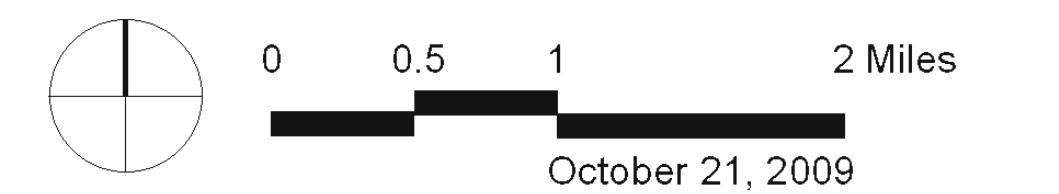
- Type 1 Waters - up to 200ft buffer
- Type 2 Waters - up to 100ft buffer
- Type 3 Waters - up to 50ft buffer
- Type 4 Waters - up to 20ft buffer for distance of up to 400ft from intersection w/ Type 1-3 waters
- Type 5 Waters - none required
- Stream Buffers

Big Game Habitat*

- Elk Calving Area
- Mule Deer Winter Range

* Although no specific county development regulations exist at this time for elk calving areas or mule deer winter range, impact to these habitats will be considered in the EIS process for the Subarea Plan.

Data Source: Kittitas County



Fish and Wildlife Habitat Conservation Areas

Upper Teanaway Subarea

S A S A K I