

Teanaway Community Forest

MODERATE DENSITY TRAIL AREA: (light green-area) Evaluate and reroute existing trails to develop a non-motorized, cross-country trail for a variety of skill levels with loops and connections between trailheads, camping areas, rock formations and views; Consider developing a system of backcountry campsites along this trail.

USFS TRAIL CONNECTIONS AND ACCESS: Partner with USFS to evaluate, improve, and maintain sustainable connections to multi-use USFS trails for hikers, bikers, equestrians and motorcycle riders. Evaluate and relocate trails along the Middle Fork and West Fork Teanaway Rivers to protect fish habitat and water quality. Convert road to trail to connect with the USFS Yellow Hill Trail. Provide trailhead facilities and improve access roads.

INDIAN CAMP: Reconfigure and relocate camping outside of the floodplain and expand equestrian camping. Develop designated day use summer parking.

COMMUNITY CONNECTIONS: Partner with adjacent landowners to develop non-motorized trail connections across Cle Elum Ridge to local communities.

HIGH DENSITY TRAIL AREA: (dark green-shaded area) Evaluate and reroute existing trails in the SW part of the TCF to provide sustainable non-motorized trails for a variety of skill levels. Provide loops and connections between trailheads, camping areas, rivers, rock formations and viewpoints, while respecting private property and reducing redundancy.

KEY

- Non-motorized trails for hiking, biking and horseback riding
- Multi-Use trails for hiking, biking, horse & motorcycles
- Scenic driving roads, seasonal access, route T.B.D.

- High Density Trail Area
- Moderate Density Trail Area
- Low Density Trail Area
- River and Road Corridor

SCENIC DRIVING LOOP: Work with user groups to manage seasonal access for scenic driving on designated low maintenance level forest roads. Route T.B.D. and to include vistas, picnic areas, wildlife viewing, providing all ability access.

29 PINES CAMPING AREA: Reconfigure and relocate camping outside of the floodplain and expand day use parking.

JACK CREEK ROAD: Partner with USFS to enhance the road for 3-season scenic driving to Red Top and Hwy 97.

INDIAN CREEK TRAILHEAD & TRAIL: Develop a trailhead for hiking, biking and horseback riding along Indian Creek and provide opportunities for interpretation of river restoration.

RED TOP: Partner with the USFS to develop a non-motorized trail connection to Red Top Mountain with long distance loop connections.

ROAD & RIVER CORRIDORS: (blue- shaded areas): Coordinate with river restoration to manage river access for fishing, swimming, boating, and day use, determining infrastructure needs.

ENTRY STATION & ENVIRONMENTAL EDUCATION: Work with public and private partners to develop an entry station and environmental education opportunities.

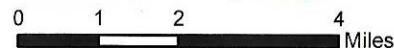
TEANAWAY VALLEY UNIT: Provide parking and short trails to the river and surrounding forest.

WEST TEANAWAY TRAILHEAD: Provide a new trailhead for hiking, biking and horseback riding in the SW part of the TCF.

TEANAWAY CAMPING AREA: Reconfigure and relocated camping outside of the floodplain and expand group camping with future equestrian camping.

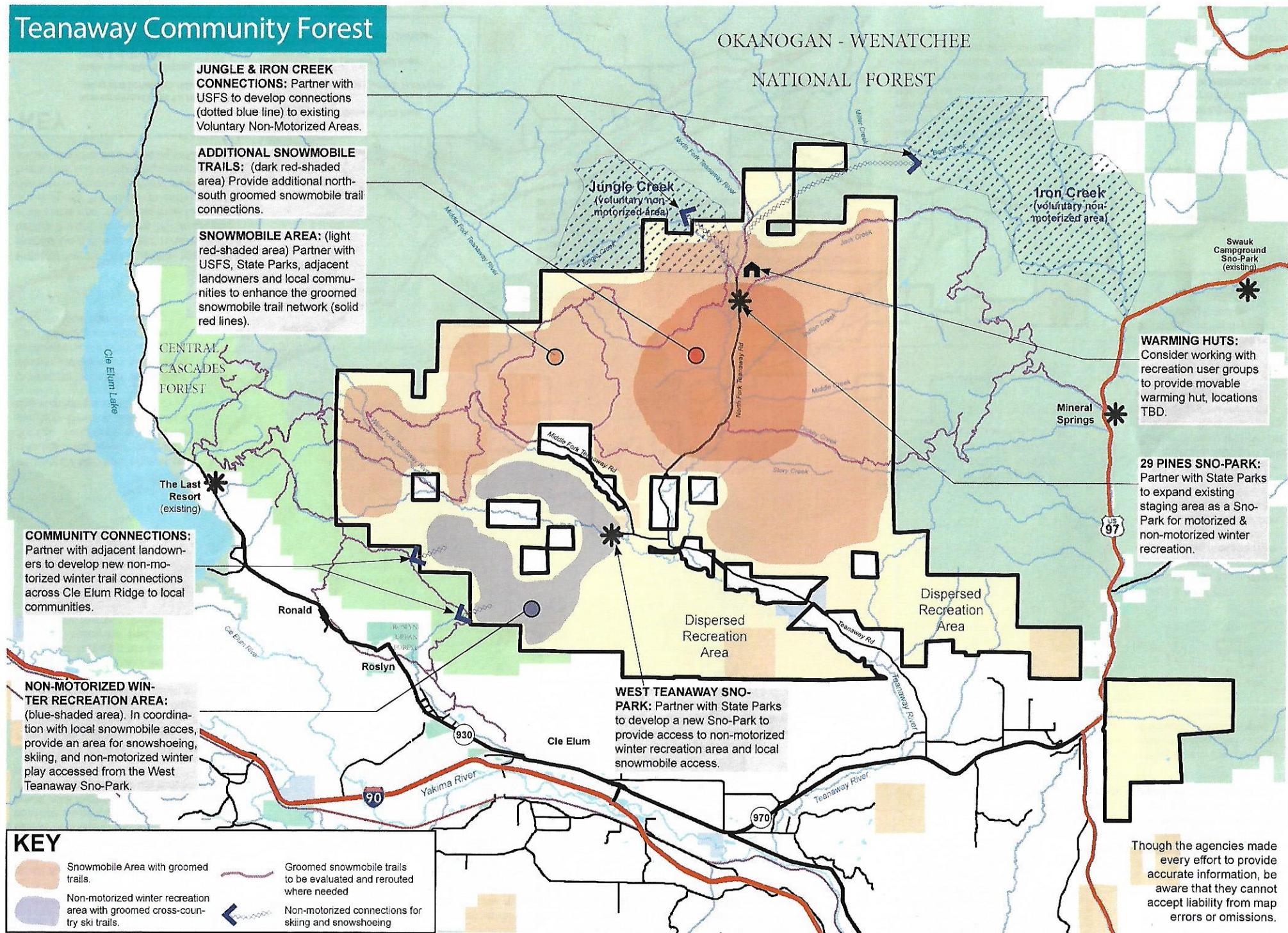
LOW DENSITY TRAIL AREA: (tan-shaded area) Develop a non-motorized, cross-country trail connecting camping areas, trailheads, viewpoints and unique features. Consider developing a system of backcountry campsites along this trail.

Summer Recreation Concept Map



Though the agencies made every effort to provide accurate information, be aware that they cannot accept liability from map errors or omissions.

Teanaway Community Forest



Winter Recreation Concept Map

PROJECT IMPLEMENTATION PHASES

PHASE 1 TEANAWAY CAMPING AREA: Reconfigure camping area to provide more sustainable facilities located outside of the river floodplain; expand group camping with future equestrian camping.

INDIAN CAMP: Reconfigure camping area to provide more sustainable facilities located outside of the river floodplain; expand equestrian camping; expand designated day-use parking.

SIGNAGE AND INFORMATION: Improve signage, maps, and information at facilities and along trails in the Community Forest. Provide links to downloadable GPS-enabled maps.

TEANAWAY VALLEY UNIT: Provide parking and information for non-motorized recreation.

PHASE 2 COMMUNITY CONNECTIONS: Partner with adjacent landowners to develop non-motorized trail connections across Cle Elum Ridge to the communities of Roslyn, Ronald, and Cle Elum for summer and winter recreation.

HIGH DENSITY TRAIL AREA: (dark green-shaded area) Evaluate and reroute as necessary existing trails in the southwest part of the Community Forest to provide sustainable non-motorized trails for a variety of skill levels. Provide loops and connections between trailheads, camping areas, rivers, rock formations and viewpoints for hikers, bikers and equestrians, while respecting private property and reducing trail redundancy.

WEST TEANAWAY TRAILHEAD: Provide a new trailhead at the end of the West Fork County Road with parking, toilets and information for hiking, biking, and horseback riding in the southwestern part of the forest.

WEST TEANAWAY SNO-PARK: Partner with State Parks to manage the West Teanaway Trailhead as a Sno-Park during the winter to provide access to the non-motorized winter recreation area and to provide local snowmobile access.

NON-MOTORIZED WINTER RECREATION AREA: (blue-shaded area). In coordination with local snowmobile access and connections from private properties, provide an area for snowshoeing, skiing, and non-motorized winter play in the southwestern part of the forest, with groomed cross-country ski trails with tracks accessed from the West Teanaway Sno-Park.

29 PINES CAMPING AREA: Reconfigure and relocate portions of camping area to provide more sustainable facilities located outside of the river floodplain.

29 PINES TRAILHEAD: Provide designated day use parking for winter and summer trail access with toilets and information kiosks.

29 PINES SNO-PARK: Partner with State Parks to expand and manage the 29 Pines Trailhead as a Sno-Park for motorized and non-motorized winter recreation.

SNOWMOBILE AREA: (red-shaded area) Partner with USFS, State Parks, adjacent landowners and local communities to enhance the groomed snowmobile trail network in the northern part of the Community Forest; evaluate existing trails and relocate them to more sustainable locations where needed in coordination with forest road planning. Provide additional north-south groomed snowmobile trail connections to improve grooming efficiency by creating loop trails.

TEANAWAY VALLEY UNIT: Provide trails accessed from parking area to the river and surrounding forest.

TEANAWAY SCENIC DRIVING LOOP: Work with user groups to manage seasonal access for scenic driving on designated low maintenance level forest roads. Route to include vistas, picnic areas, wildlife viewing, providing all ability access. Final location to be determined.

ENTRY STATION: Work with public and private partners to locate and develop an entry station for visitors to the Community Forest.

PROJECT IMPLEMENTATION PHASES

PHASE 3 ENVIRONMENTAL EDUCATION: Work with public and private partners to locate and develop environmental education opportunities in the Community Forest.

3

ROAD AND RIVER CORRIDORS: (blue-shaded areas): Coordinate with river restoration efforts to manage river access for fishing, swimming, boating, and day use, determining infrastructure needs.

DICKEY CREEK ACCESS: Provide parking and toilets and improve river access.

INDIAN CREEK TRAILHEAD AND TRAIL: Develop a trailhead for hiking, biking and horseback riding along Indian Creek, and provide opportunities for interpretation of river restoration. Trailhead to include parking for horse trailers and passenger vehicles, information and toilets.

WARMING HUTS: Work with recreation user groups to provide movable warming huts at locations to be determined and look at options for expansion in the future, if appropriate.

MODERATE DENSITY TRAIL AREA: (light green-shaded area) Evaluate and reroute existing trails to develop a non-motorized, cross-country trail for a variety of skill levels with loops and connections between trailheads, camping areas, rock formations and views for hikers, bikers and equestrians; Consider developing a system of backcountry campsites along this trail.

WEST FORK TRAIL AND TRAILHEAD: Develop a trailhead with parking, information, and toilets for hikers, mountain bikers, equestrians and motorcycle riders accessing the multi-use West Fork Trail. Partner with USFS to evaluate, improve, and relocate portions of the trail along the West Fork of the Teanaway River to protect fish habitat and water quality and to create a more sustainable trail, which starts in the Teanaway Community Forest and continues into the Okanogan-Wenatchee National Forest.

MIDDLE FORK TRAIL AND TRAILHEAD: Develop a trailhead with parking, information, and toilets for hikers, mountain bikers, equestrians, and motorcycle riders accessing the multi-use Middle Fork Trail. Partner with USFS to evaluate, improve, and relocate portions of the trail along the Middle Fork of the Teanaway River to protect fish habitat and water quality to create a more sustainable trail, which starts in the Teanaway Community Forest and continues into the Okanogan-Wenatchee National Forest.

YELLOW HILL TRAIL AND TRAILHEAD: Develop a trailhead with parking, information, and toilets and convert the forest road to a trail connecting to the multi-use Yellow Hill Trail for hikers, mountain bikers, equestrians and motorcycle riders. Partner with USFS to evaluate, improve, and maintain the trail, which starts in the Teanaway Community Forest and continues into the Okanogan-Wenatchee National Forest.

PHASE 4 JACK CREEK ROAD: Partner with U.S. Forest Service to enhance the road for 3-season scenic driving to Red Top and Hwy 97.

4

RED TOP CONNECTION: Partner with the USFS to develop a non-motorized trail connection from the Community Forest to Redtop with long distance loop connections.

LOW DENSITY TRAIL AREA: (tan-shaded area) Develop a non-motorized, cross-country trail connecting camping areas, trailheads, viewpoints and unique features for hikers, bikers and equestrians. Consider developing a system of backcountry campsites along this trail.

WINTER JUNGLE CREEK AND IRON CREEK CONNECTIONS: Partner with USFS to develop connections to existing Jungle Creek and Iron Creek voluntary non-motorized areas.

BACKCOUNTRY CAMPING: Pilot providing a system of remote hardened designated tent sites in backcountry locations in partnership with adjacent land managers.