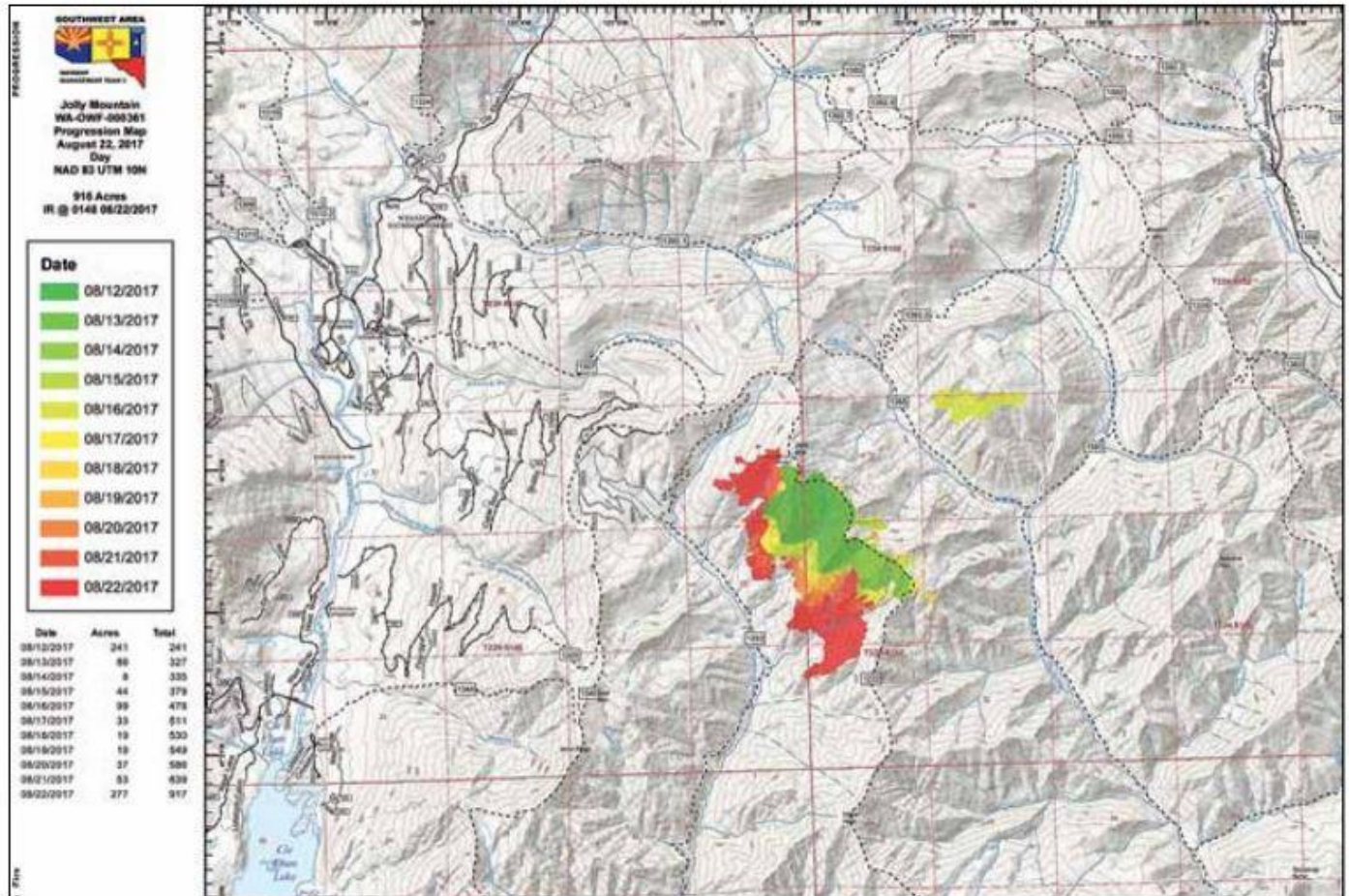


Jolly Mountain Fire continues to grow, may cross river



INCIWEB

This map shows the progression of the Jolly Mountain Fire in Upper Kittitas County as of Tuesday.

BY TONY BUHR
 staff writer

The Jolly Mountain Fire in Upper Kittitas County has grown to 1,208 acres to the north, the west and the south, fire information officers said this morning.

The fire continues to burn north and west through dry, beetle-killed

timber, public information officer Al Koss said. The fire is being helped by warm weather and low humidity and spreads when temperatures rise. The fire is burning back on itself moving up and down the hillside.

On its southern flanks the fire is approaching the West Fork Teanaway River and may cross it today. In the north it is headed toward the

Sasse Mountain area, Koss said.

Today winds will shift westerly and blow smoke into Cle Elum. Structures are not threatened.

The Jolly Mountain Fire started Aug. 11 after a series of lightning strikes in the region. It is burning in a remote, hard-to-reach area near the northern shore of Lake Cle Elum.